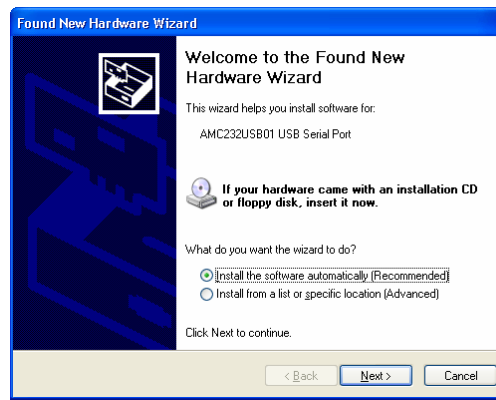


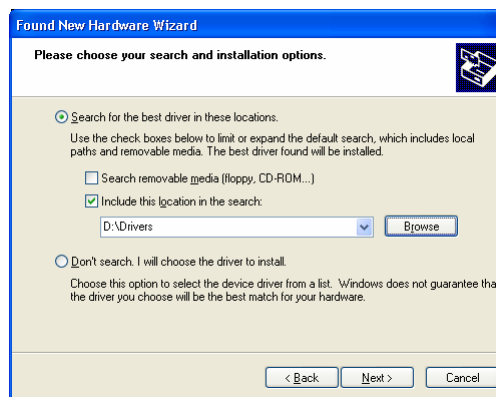
## USB Fast Download Lead - Installation Note

### Part 1 - Install Device Driver

1. Plug the fast download lead into a USB port; the Found New Hardware Wizard appears.



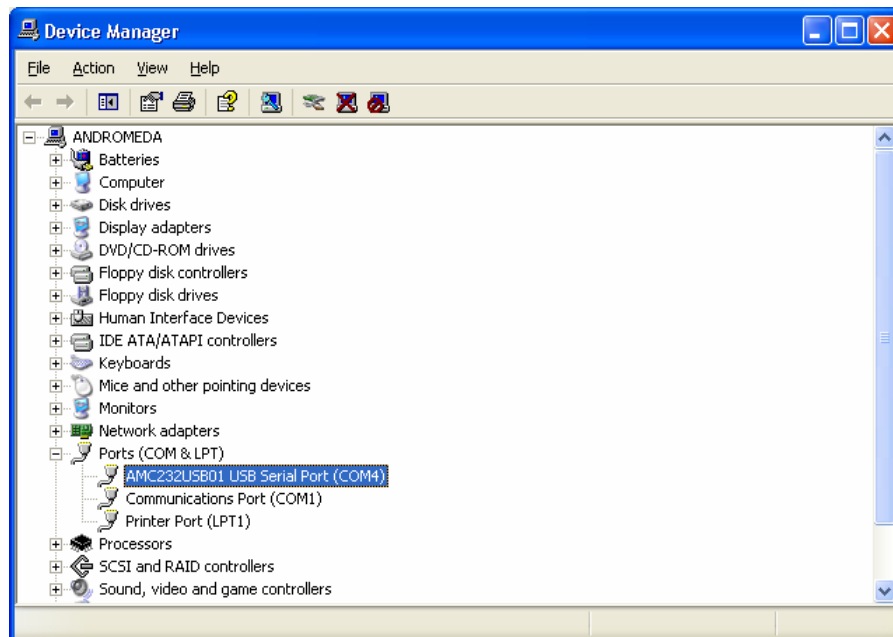
2. Select the **Install from list or specific location (Advanced)** option and click **Next**.
3. On the next dialog select the **Search for the best driver in these locations** option and check the **Include this location in the search**. Then use the **Browse** button to locate the Drivers folder on the Podium Plus CD or type 'D:\Drivers' in the box if your CD drive is drive D:. Click **Next**.



4. The wizard finds the correct drivers and installs them. Click **Finish**.

## Part 2 - Set Serial Port in Podium Plus

1. Open the Device Manager (click **Start**, and then click **Control Panel**. Click **Performance and Maintenance**, and then click **System**. On the **Hardware** tab, click **Device Manager**) and note the COM port assigned to the AMC232USB01 device in the **Ports (COM & LPT)** list, e.g. COM4.



2. To work as a fast download lead with Podium Plus the USB serial adapter must be installed as COM3 or above. If it is not the properties of the device will need to be changed as follows. Right click the adapter entry in Device Manager and select **Properties** from the menu. On the **Port Settings** tab click **Advanced**. Change the value in the **COM Port Number** to COM3 or greater and click **OK**. Close the properties dialog by clicking **OK**. In Device Manager select **Action** ➔ **Scan for hardware changes** to update the list. Check that the COM port value is now correct.
3. Start Podium Plus and set the serial port by choosing the **Setup** ➔ **Serial Port** option from the main menu and selecting the COM port assigned to the USB fast download lead as described above.
4. Your USB fast download lead is now ready to use.